



THE TAMARIND GLOBAL NEWSLETTER MAY 22

EXCITING HOTEL OPENINGS IN 2022

JW MARRIOTT BENGALURU PRESTIGE GOLFSHIRE RESORT & SPA



Where? Bengaluru, Karnataka

What is unique? Second addition in the city, 20 minutes from the airport and minutes away from attractions such as Nandi Hills, Grover Vineyards or the Devanahalli and Lepakshi Temples, every business trip here is a pleasure and every vacation is a stay of lifetime.

Why? Delight in premium services and dynamic activities, from garden terrace and golf course to lagoon and lap pool or the billiards table and bowling alley. At the end of the day, return to a specialty room, Villa or a suite with wireless internet, a terrace garden with outdoor seating, and majestic views of Nandi Hills and golf course.

RADISSON HOTEL NATHDWARA



Where? Nathdwara, Rajasthan

What is unique? International branded hotel in the city, closest to the must-see heritage sites like Eklingji, Haldighati, and Kumbhalgarh, including the famous Shrinathji Temple and overlooking The Statue of Belief, world's largest statue of Shiva.

Why? Strategically located within The Miraj Complex, each room comes with window sitting area offering mesmerizing views of The Statue of Belief and Aravalli hills. Hotel also offers shuttle services to both Shrinathji Temple and Statue of Belief.

HYATT REGENCY, DEHRADUN

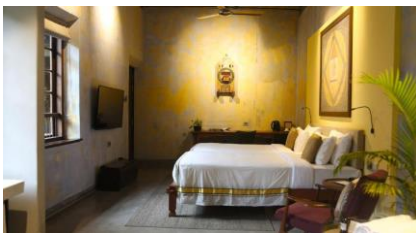


Where? Dehradun, Uttarakhand

What is unique? Located at the foothills of Himalayas, hotel offers enthralling views of the scenic Malsi forest and the Himalayan ranges.

Why? Hotel serves as a gateway for immersive experiences designed to deliver multisensory practices, local food trails, adventure sports, cultural sights, and pilgrimage.

THE POSTCARD MANDALAY, KOCHI



Where? Kochi, Kerala

What is unique? Somewhere between history and present, Postcard Kochi's timeless spirit comes from Mattancherry, a neighbourhood that has seen the comings and goings of civilization - seen through its churches, temples, mosques, and synagogue rubbing shoulders with colonial buildings.

Why? Curated with artworks by handpicked artists and are utterly luxurious, with voluminous bed, choicest furniture, and other design touches that are best discovered once you check in.

JAWAI BERA – WHERE LEOPARDS ROAM THE LAND

Personal note by Karan Bakshi – The General Manager of Welcomheritage Cheetahgarh Resort & Spa



I get into this open Safari Jeep with padded seats & beams and set out to track the elusive Leopard. No sooner than I exited the resort, I looked out for any forest gate or marked route in our search for the Leopard and to my surprise I didn't find any. Suddenly, in a few minutes, our driver gets a call which sends him hitting 3000 on the dirt roadthe call is from a local Rabari who is part of their leopard information tracking chain and has passed on the news of a sighting, at Jagtala, of the well-known leopard "Neelam and her cubs". We cover a distance of 5 km in less than 10 minutes (that explains the padded seats and beams) and get there in time to see Neelam lounging on the granite outcropping. She sits there calmly gazing at us, having seen many before us, and goes about playing with her cubs before slipping into the rock crevasses. What amazes me is that all of this is being played out a mere kilometer away from the Rabari settlement, shepherds roaming with their cattle, with no demarcation between core and buffer zones, no barrier between man and beast ... just the wildlife and the shepherds and their overlapping universes.

LEOPARDS

A BINSAR SPRING ESCAPE

By Anjali Tolani, Tamarind Global



The sleepy town of Binsar is one of the scenic places of Kumaon region in Uttarakhand. Perched at an elevation of 2420 metres, Binsar is not easy to get to, hence does not attract the comfort seeking tourist but is a great destination for travellers who are looking for an active holiday involving trekking, jungle walks, bird watching and even a try at leopard spotting. Located such that it offers spell-binding views of the majestic Himalayan peaks such as Chaukhamba, Nanda Devi, Nanda Kot, Panchachuli, and Kedarnath, Binsar is fringed by the Binsar Wildlife Sanctuary.

Binsar wildlife sanctuary is spread over 47.2 Sq. km and is the habitat of approximately 250 species of birds. The sanctuary houses about five private resorts and entry for visitors and vehicles is charged at the Ayarpani gate to the national park.

Having left our home in Gurgaon at an ungodly hour to catch the Kathgodam Shatabdi from New Delhi Railway station, and then driven through the hair pin bends of Kumaon, we were queasy in our stomachs and beyond exhausted ... till we entered the gates of the sanctuary. It's as if the whole forest had been lit bright red to welcome us. In front of us, around us, at our feet and all over were blooms of blazing red rhododendrons. We had caught the spring in Binsar at its peak and was it a sight for our weary bodies!

[READ MORE](#)

SPOTLIGHT ON FESTIVAL - MOATSU



When? 1st to the 3rd of May, sometimes stretching the entire week

Where? Mokokchung district villages ((Chuchuyimlang village), Nagaland, nearest **city** is Imphal
Moatsu festival is one of the most eagerly awaited festivals in this little yet beautiful state of Nagaland. Making the entire state lively with its vibrant festivities, Moatsu Mong festival is celebrated by Ao tribe of the state. Major celebration of the Moatsu festival is in hope of a good harvest.

[READ MORE](#)

India offices:

Mumbai, Delhi, Ahmedabad, Bangalore, Chennai, Cochin, Jaipur, Jodhpur, Kolkata, Pune, Udaipur, Vadodara.

Marketing offices:

Canada, Russia, Saudi Arabia, United Arab Emirates, United Kingdom

Mumbai: 701, 7th Floor, Crest Corner, 204, Waterfield Road, Bandra West, Mumbai 400 050

Tel: +91-22-66802500 | Fax: +91-22-67102876

Gurgaon: 5th Floor, Building No 91, Sector – 44, Gurgaon 122003

Tel: +91-124-4565454 | Fax: +91-124-2570337

Website: www.tamarindglobal.com | www.tamarindglobalweddings.com | Email: info@tamarindglobal.com

